

Top-quality entry-level solution for PDF

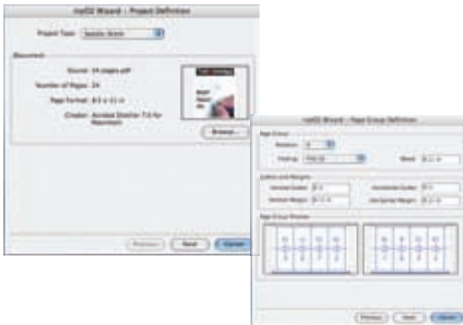
inpO2 ATOM is the entry-level edition of Dynagram's famous Adobe® Acrobat® plug-in: inpO2. It allows for end-to-end PDF prepress workflow when coupled with a PDF-enabled RIP.

HIGHLIGHTS

- _ Entire impositions can be created for Step & Repeat, Cut & Stack, N-up, Perfect Bound and Saddle-stitched job types.
- _ The easy and compact Wizard interface ensures thorough validation at each step.
- _ The *Previous* and *Next* buttons allow you to modify the job's settings, without having to start over.
- _ Save your layout and simply import new source files to create similar jobs.

How it works

inpO2 ATOM's Wizard makes the production of imposition layouts faster and simpler! The imposition can be created in a few quick steps.



_ You first select the job type, along with the PDF document to be imposed.

_ The sheet properties, workstyle and page group are then defined. The Wizard automatically creates the maximum number of pages and the preview pane displays the resulting layout in real time.

_ Different marks can then be defined and added.

_ The Summary panel confirms the layout parameters and offers controls for final adjustments. The intuitive light-table interface provides easy-to-use tools to make final adjustments, when necessary.



FILE FORMATS

- Input: PDF
- Output: PDF



TECHNICALS SPECIFICATIONS:

MINIMUM REQUIREMENTS

MAC OS X

Software Requirements

- _ Adobe® Acrobat® Standard or Professional (Professional recommended)
- _ Version 8.0+ (not compatible with Acrobat 7.0+)

Hardware and Systems Requirements

- _ PowerPC® G4 or G5 processor, or Intel processor (G5 recommended)
- _ Mac OS X v.10.3.x or 10.4.x
- _ 128 MB of RAM (256 MB recommended)
- _ 495 MB of available hard-disk space
- _ 1,024 x 768 screen resolution (1,280 x 1,024 recommended)
- _ CD-ROM drive
- _ USB Port for hardware key

Windows

Software Requirements

- _ Adobe® Acrobat® Standard or Professional (Professional recommended)
- _ Version 8.0+ (not compatible with Acrobat 7.0+)

Hardware and Systems Requirements

- _ Intel® Pentium® processor
- _ Microsoft® Windows® 2000 with Service Pack 2 or Windows XP (SP2 recommended)
- _ 128 MB of RAM (256 MB recommended)
- _ 460 MB of available hard-disk space
- _ 1,024 x 768 screen resolution (1,280 x 1,024 recommended)
- _ CD-ROM drive
- _ USB Port for hardware key