

Think you know imposition? Think again.

inpO2 is the next-generation imposition solution specifically designed for contemporary printers deploying end-to-end PDF workflows. inpO2 integrates powerful imposition technology within a familiar environment: Adobe® Acrobat®. More power means you can tackle any of your customers' mind-bending (or not!) impositions—and get the job done on time. An intuitive interface means less time spent figuring out imposition and your imposition software. inpO2 is the best of both worlds. So simple yet so powerful.

HIGHLIGHTS

- _ Imposition solution for Acrobat Standard and Professional 8 users.
- _ Feature-rich application using the latest formats and technology (XML, PDF, JDF), available for Windows and Mac OSX.
- _ 100% WYSIWYG and fast learning curve.
- _ Fully integrated within Acrobat's environment.
- _ PDF impositions can even be reopened on the fly and annotated for client's approval.
- _ inpO2 is available with floating licenses to output from multiple workstations
- _ A wizard is available to walk you through the imposition process.

inpO2 LINE OF PRODUCT INCLUDES:

inpO2

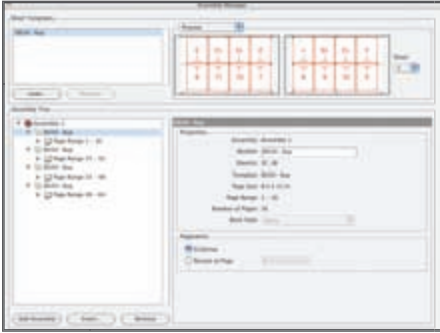
Full-featured Acrobat plug-in. Unlimited sheet format.

inpO2 WEB

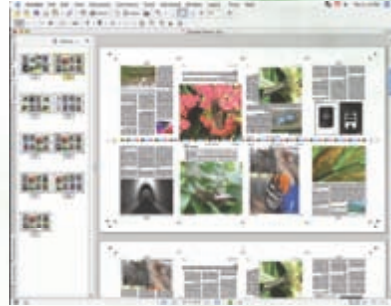
inpO2 WEB is a specialized edition for web printers featuring pagination algorithms such as multi-web (any number), automatic partial web creation (1/4, 1/3, 1/2, 2/3 or 3/4), split web (any number of ribbons), and cut and stacked section assemblies. It allows for Saddle-stitched, Perfect Bound and Come and Go binding types.

The Two Working Modes

There are two main working modes in inpO2:
template and binding-based assembly or on-the-fly imposition.



Producing more complex impositions can be performed by importing a saved template into the Assembly Manager to set binding, to create booklets and to adjust creep before outputting the imposition. The resulting layout can then be modified on the light table afterwards. The Assembly Manager offers an innovative, intuitive, robust and flexible interface for publication assembly. inpO2's unique Assembly Tree view supports the most complex paginations instantly, in a few clicks of the mouse.



Producing impositions on the fly allows working directly on the light table and outputting imposed documents directly. This type of workflow is best suited to flatworks or small publications that require no page calculation or creep adjustment.

TECHNICALS SPECIFICATIONS:

MINIMUM REQUIREMENTS

MAC OS X

Software Requirements

- _ Adobe® Acrobat® Standard or Professional (Professional recommended)
- _ Version 8.0+ (not compatible with Acrobat 7.0+)

Hardware and Systems Requirements

- _ PowerPC® G4 or G5 processor, or Intel processor (G5 recommended)
- _ Mac OS X v.10.3.x or 10.4.x
- _ 128 MB of RAM (256 MB recommended)
- _ 495 MB of available hard-disk space
- _ 1,024 x 768 screen resolution (1,280 x 1,024 recommended)
- _ CD-ROM drive
- _ USB Port for hardware key

Windows

Software Requirements

- _ Adobe® Acrobat® Standard or Professional (Professional recommended)
- _ Version 8.0+ (not compatible with Acrobat 7.0+)

Hardware and Systems Requirements

- _ Intel® Pentium® processor
- _ Microsoft® Windows® 2000 with Service Pack 2 or Windows XP (SP2 recommended)
- _ 128 MB of RAM (256 MB recommended)
- _ 460 MB of available hard-disk space
- _ 1,024 x 768 screen resolution (1,280 x 1,024 recommended)
- _ CD-ROM drive
- _ USB Port for hardware key

FILE FORMATS

- Input: PDF
- Output: PDF & JDF